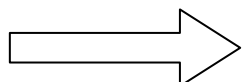


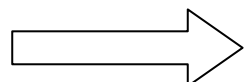
# UXO PROJECT FLOWCHART



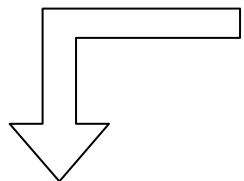
DEVELOP COST ESTIMATE BASED ON TOTAL AREA TO BE SURVEYED



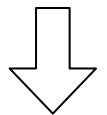
MEET WITH CLIENT TO ESTABLISH PROJECT SCHEDULE AND TO OBTAIN SITE ACCESS



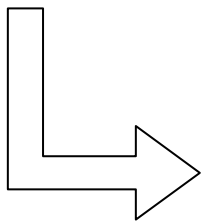
GRID SITE AND ESTABLISH SURVEY COORDINATE SYSTEM, BEGIN DATA ACQUISITION



LIMITED FIELD DATA PROCESSING TO ENSURE DATA QUALITY



COMPLETE DATA PROCESSING, CREATE SITE MAP, FIELD CHECK UXO ANOMALY LOCATIONS



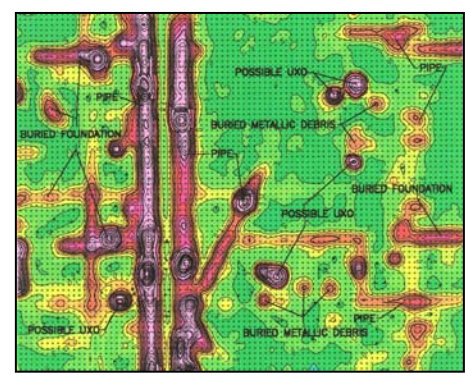
*Geometrics G-858 Magnetometer*



*Geonics EM-31*

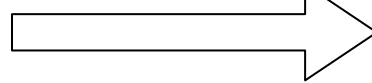


*Geonics EM-61*

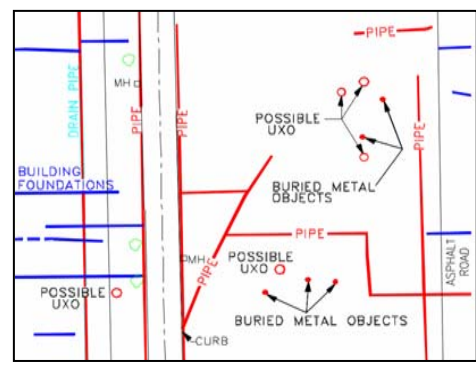


*Processed EM-61 data*

INVERT MAGNETIC AND EM-61 DATA TO COMPUTE UXO LOCATION, DEPTH AND MASS



PRESENT REPORT CONTAINING RESULTS AND INTERPRETATION TO THE CLIENT



*Geophysical Interpretation*